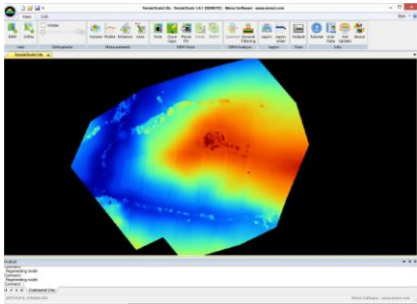




# TerrainTools Software Features



TerrainTools is a software dedicated to 3D terrain models analysis and edit. With TerrainTools you can evaluate volume, profiles, subtract DEMs, extract DTM (ground) from DSM and so on. It includes a simplified CAD with basic features and tools.

## What's New?

Create DEM from LAS or ASCII file Tool  
Terrain Analysis Tool  
Terrain Analysis and NDVI map management  
When importing orthofoto or DEM, pyramidal level can be generated  
Ground Filtering in a selected area  
Rasterize entities to DEM tool  
Set entity elevation from DEM tool  
DEM Merge and Split tools  
Setup Tiles tool miss some tiles  
Compare surfaces tool  
Contours line generation  
Create DEM from TIN tool  
Resize DEM tool

## Main features

- Import/export of gtif/tif DEMs
- Import of GeoTIFF orthophoto
- Blended overlapped view of DEMs and orthophoto
- Volume evaluation (related to interpolated plane or reference elevation)
- Profiles analysis
- Ground extraction by given scenario
- DEMs subtraction
- fast DEM editing (hole, flood fill, gap fixing, offset)
- 2D distance and area measurements
- Layers management
- Basic CAD features: entities, styles, OSnap
- Results import/export

## Software versions

TerrainTools can works as APS extension module or standalone software.  
For trial purposes is available a TerrainTools remote web license, to test TerrainTools with your datasets.  
Remote license includes all features. TerrainTools supports 64 bit Windows versions.

## Requirements

- Operating System: Windows Seven / 8 64bit
- CPU: i3 / i5 / i7 or equivalent
- RAM: at least 4 GB
- Hard Disk: 7200 rpm suggested

